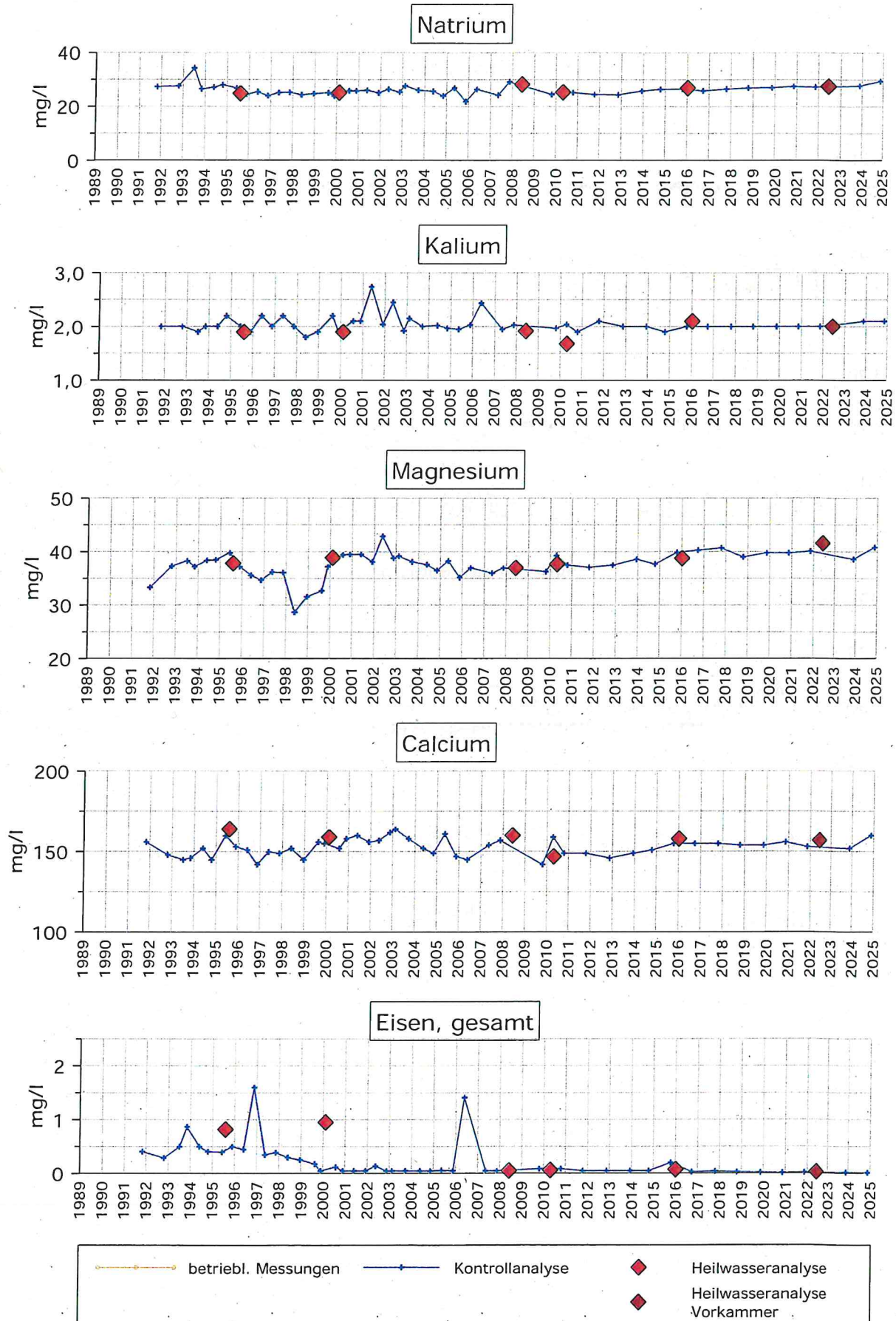
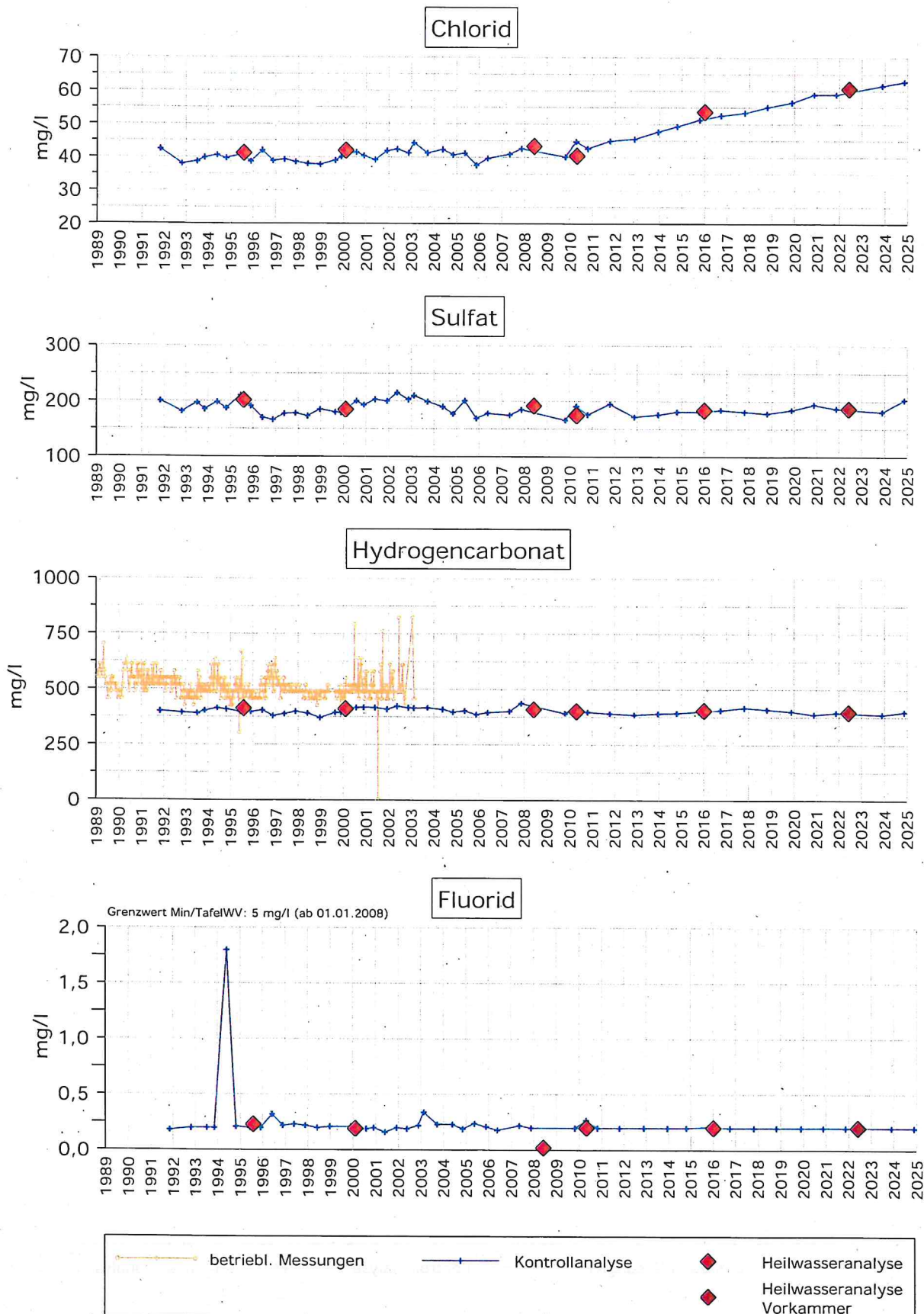


Trampel'sche Quelle

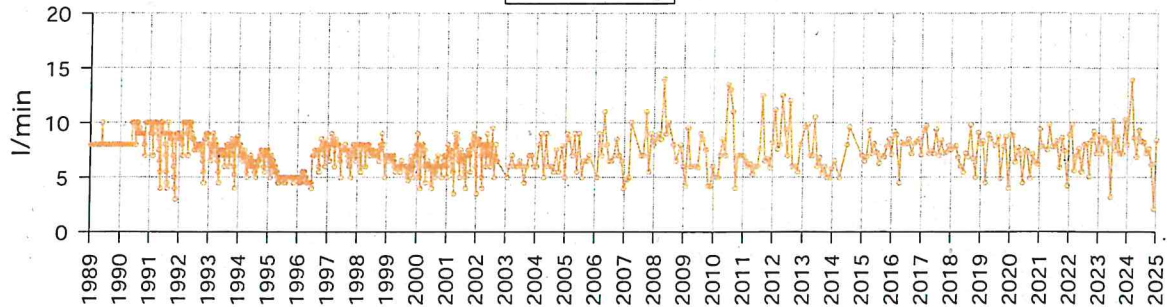


Trampel'sche Quelle

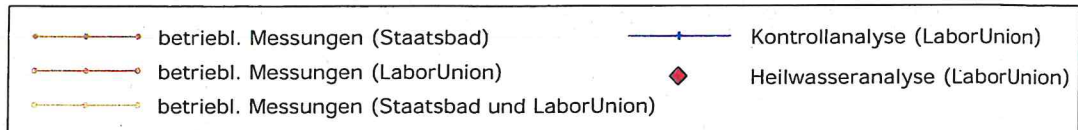
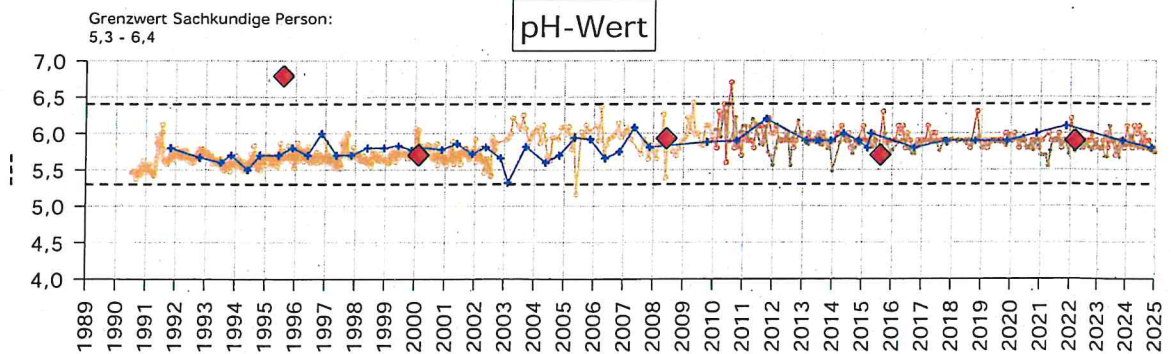
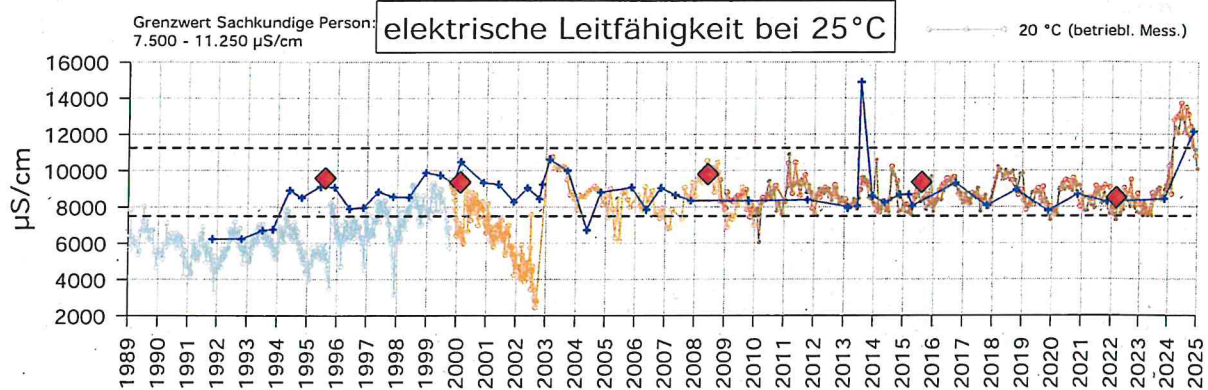
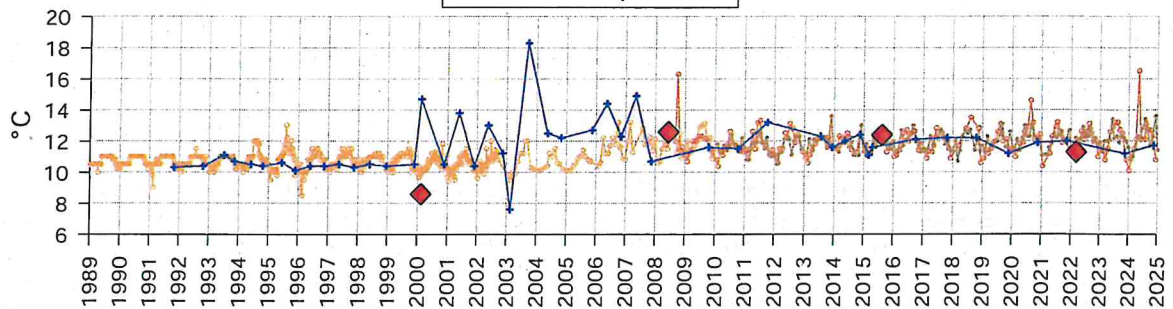


Wolfgangquelle II

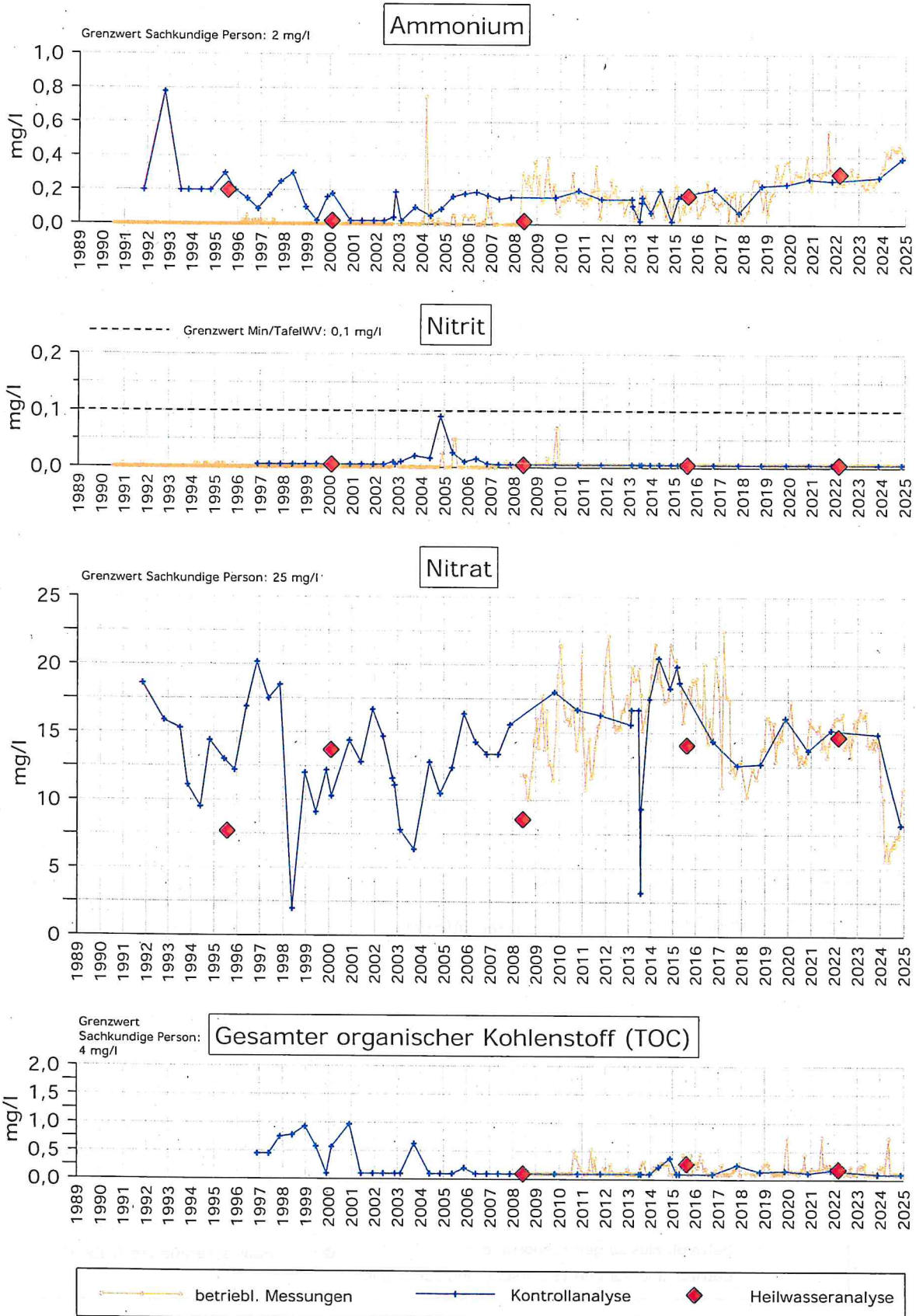
Förderung



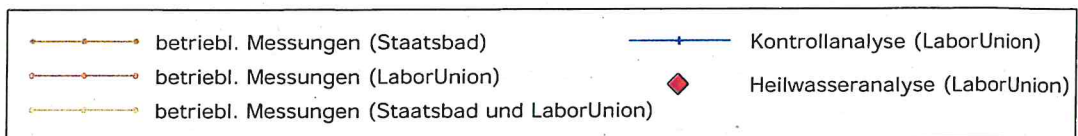
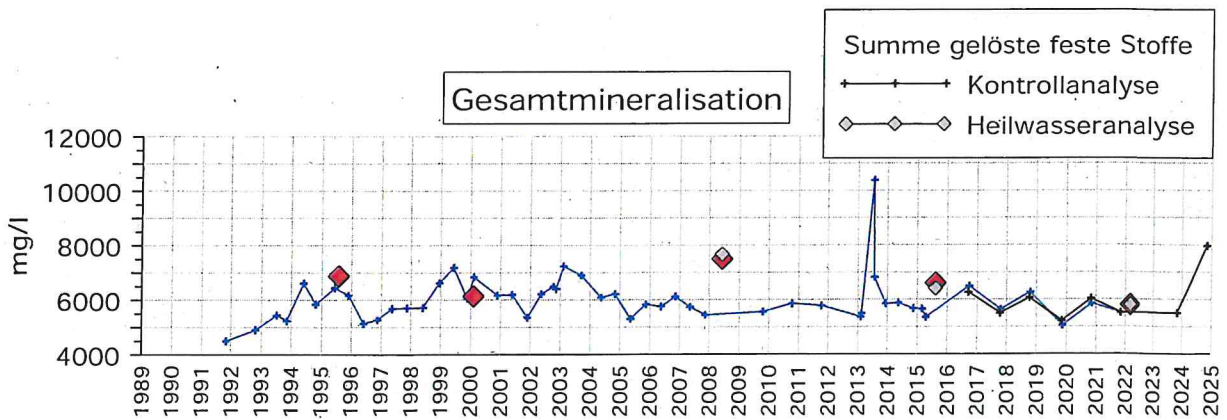
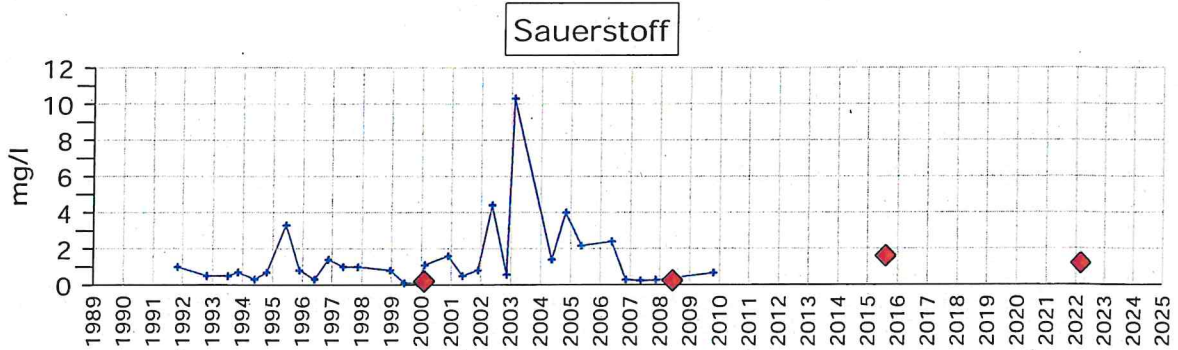
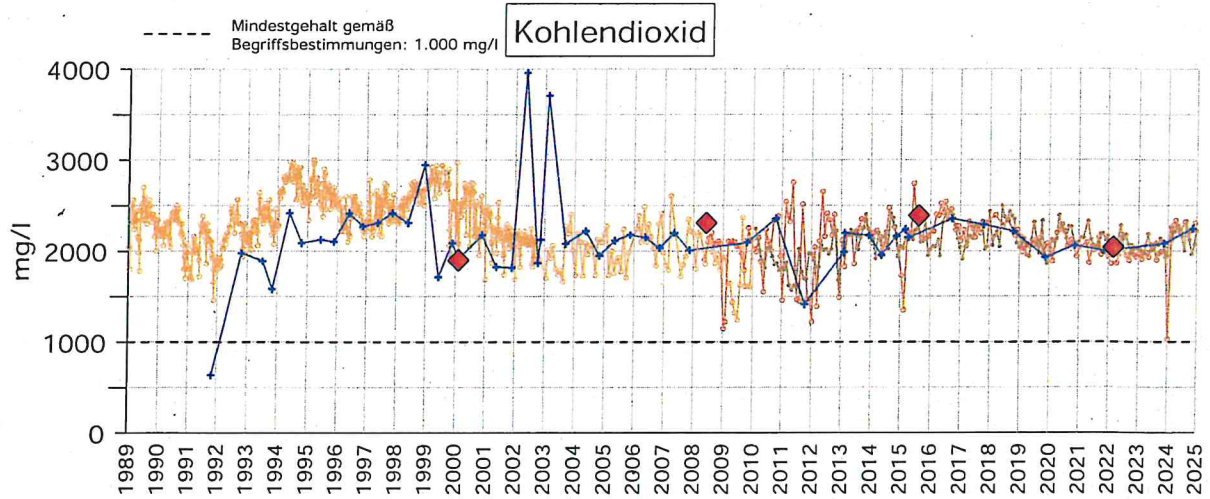
Wassertemperatur



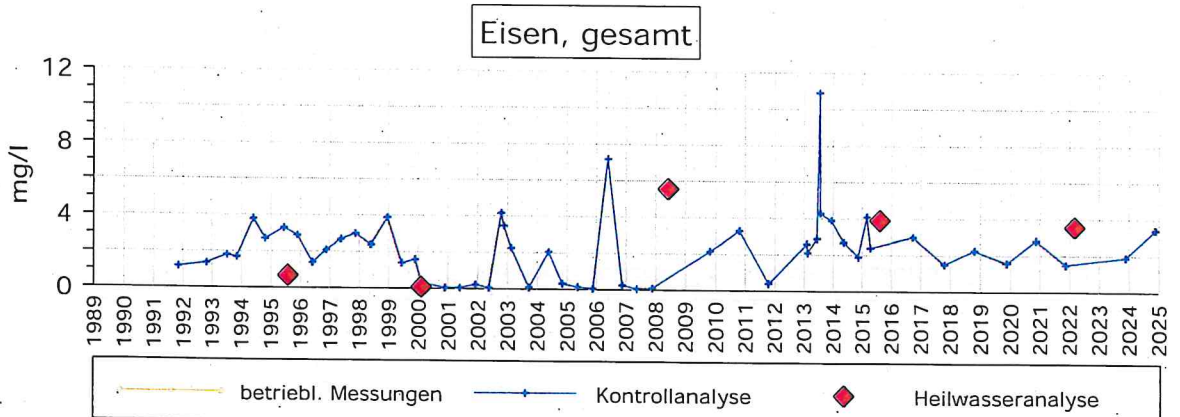
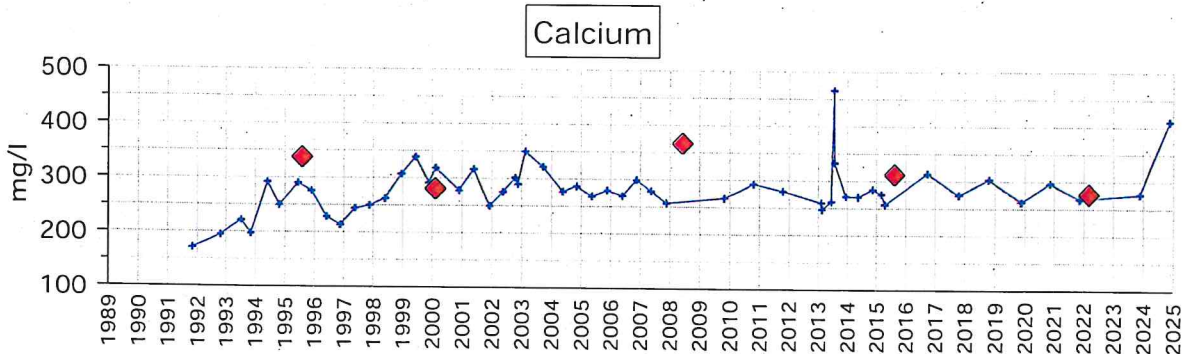
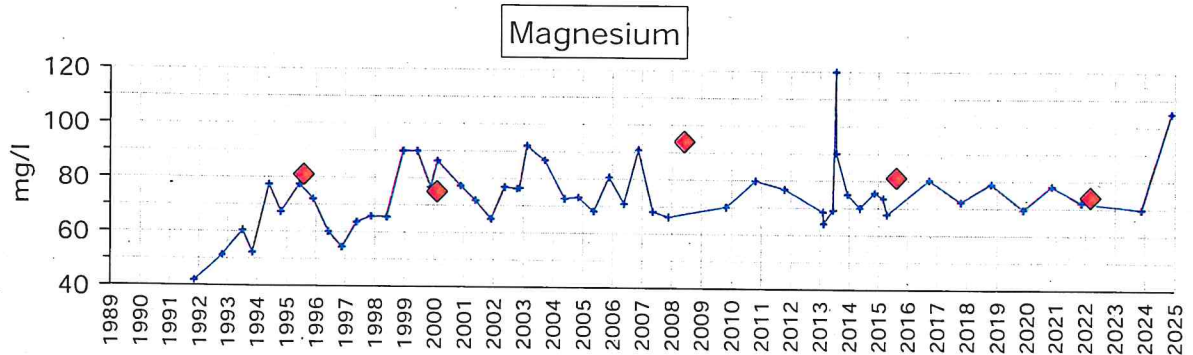
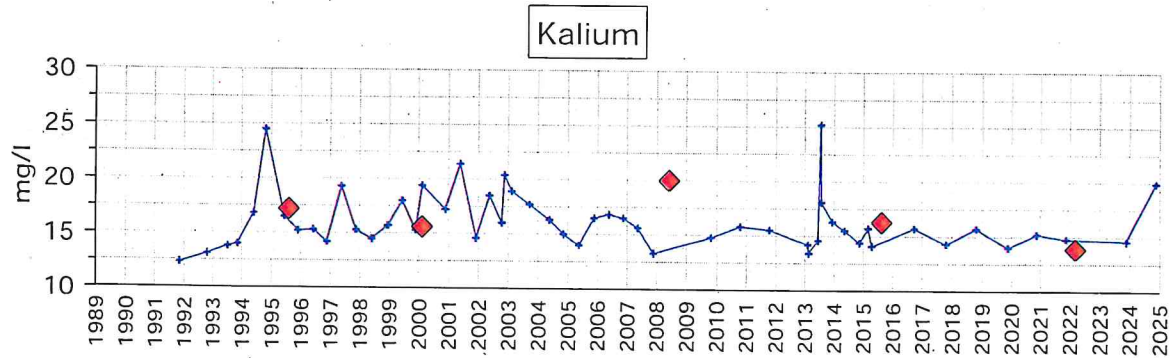
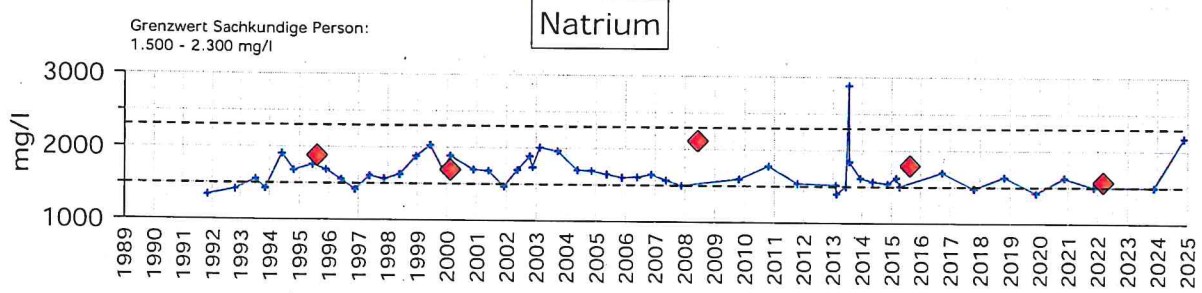
Wolfgangquelle II



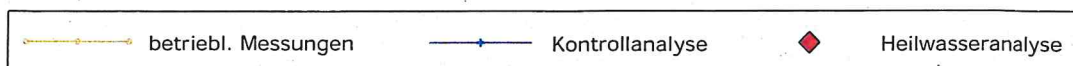
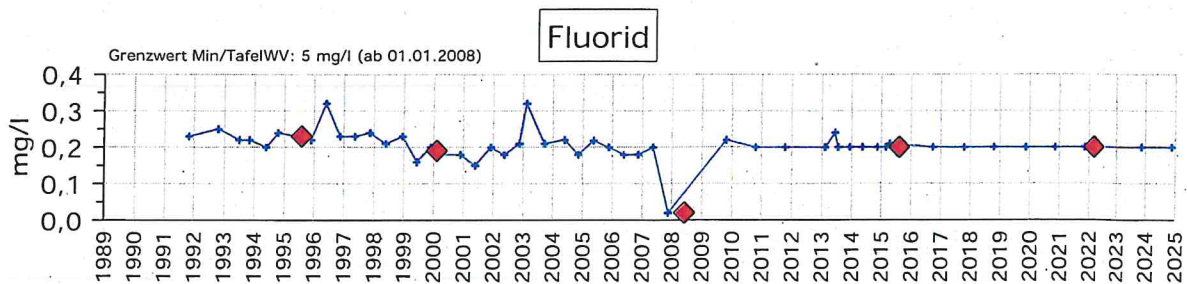
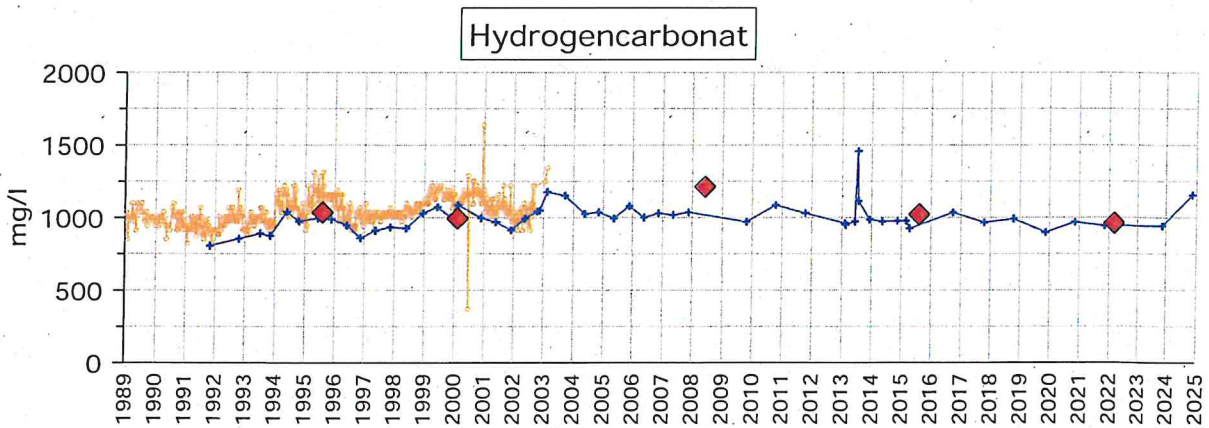
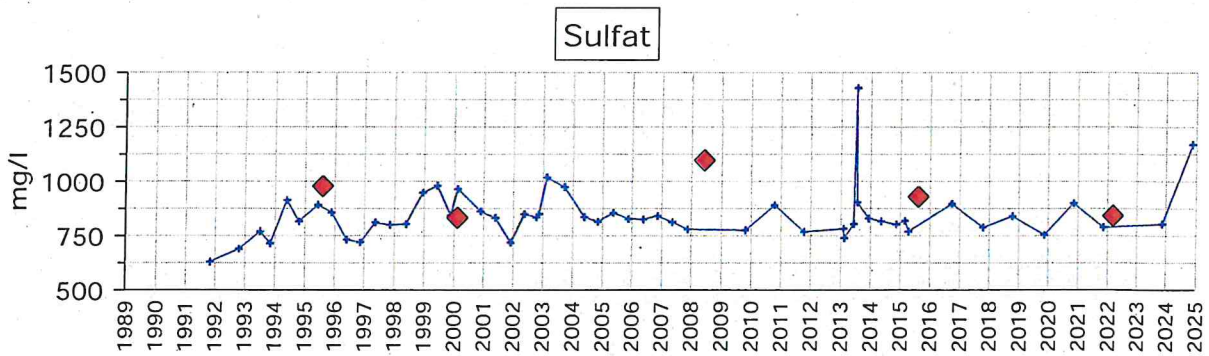
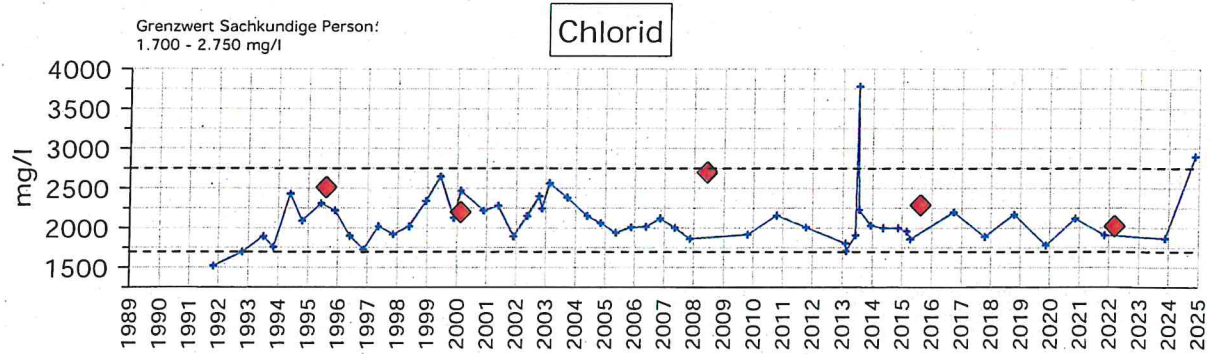
Wolfgangquelle II



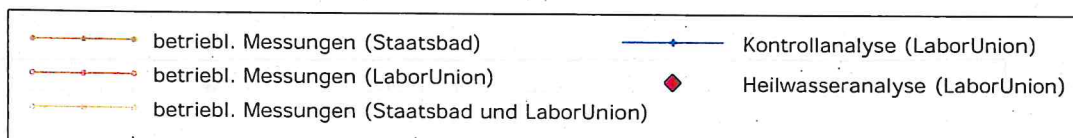
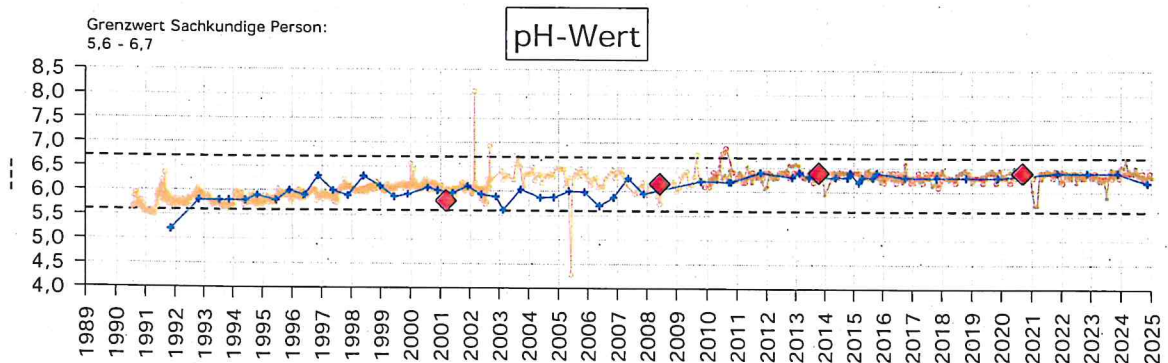
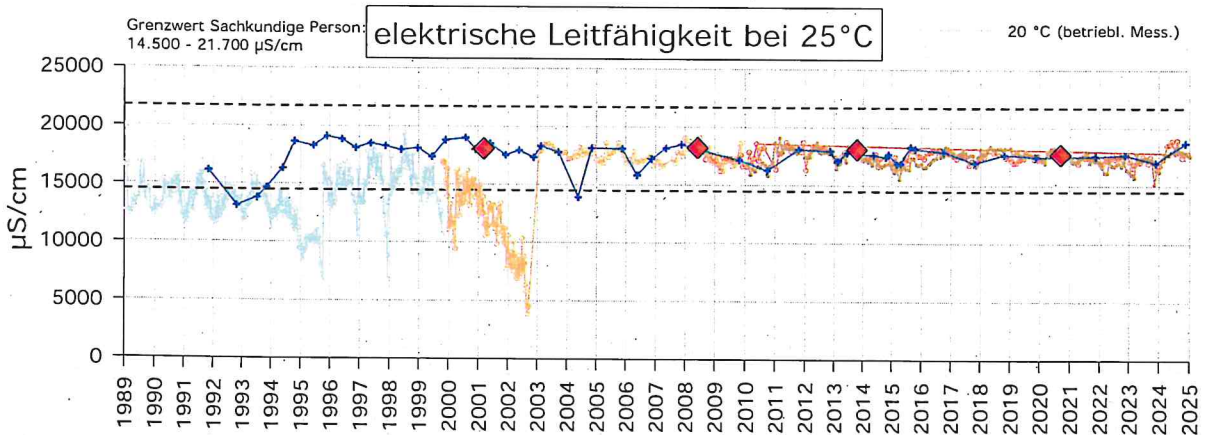
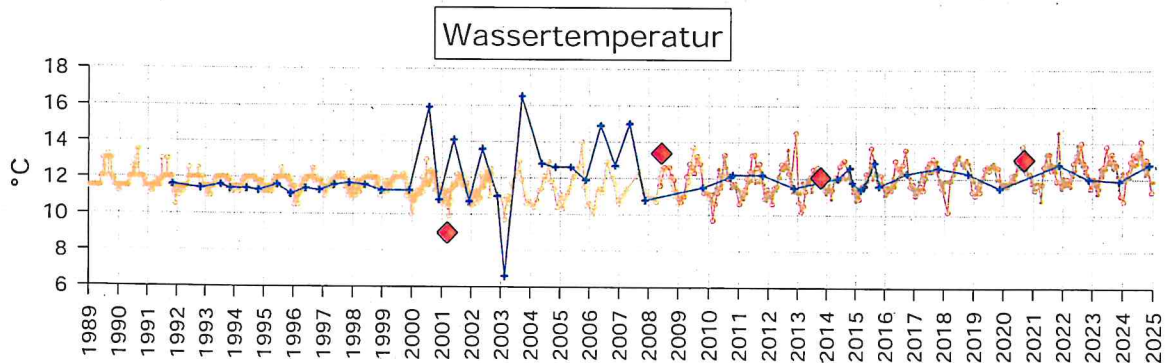
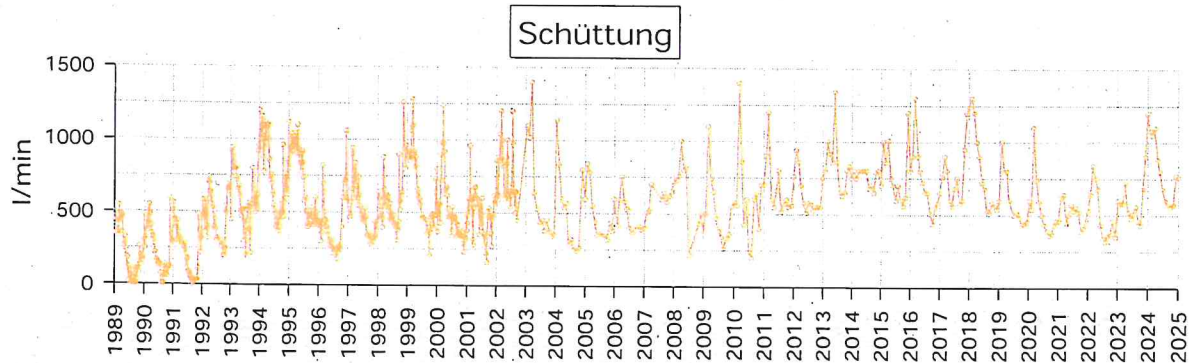
Wolfgangquelle II



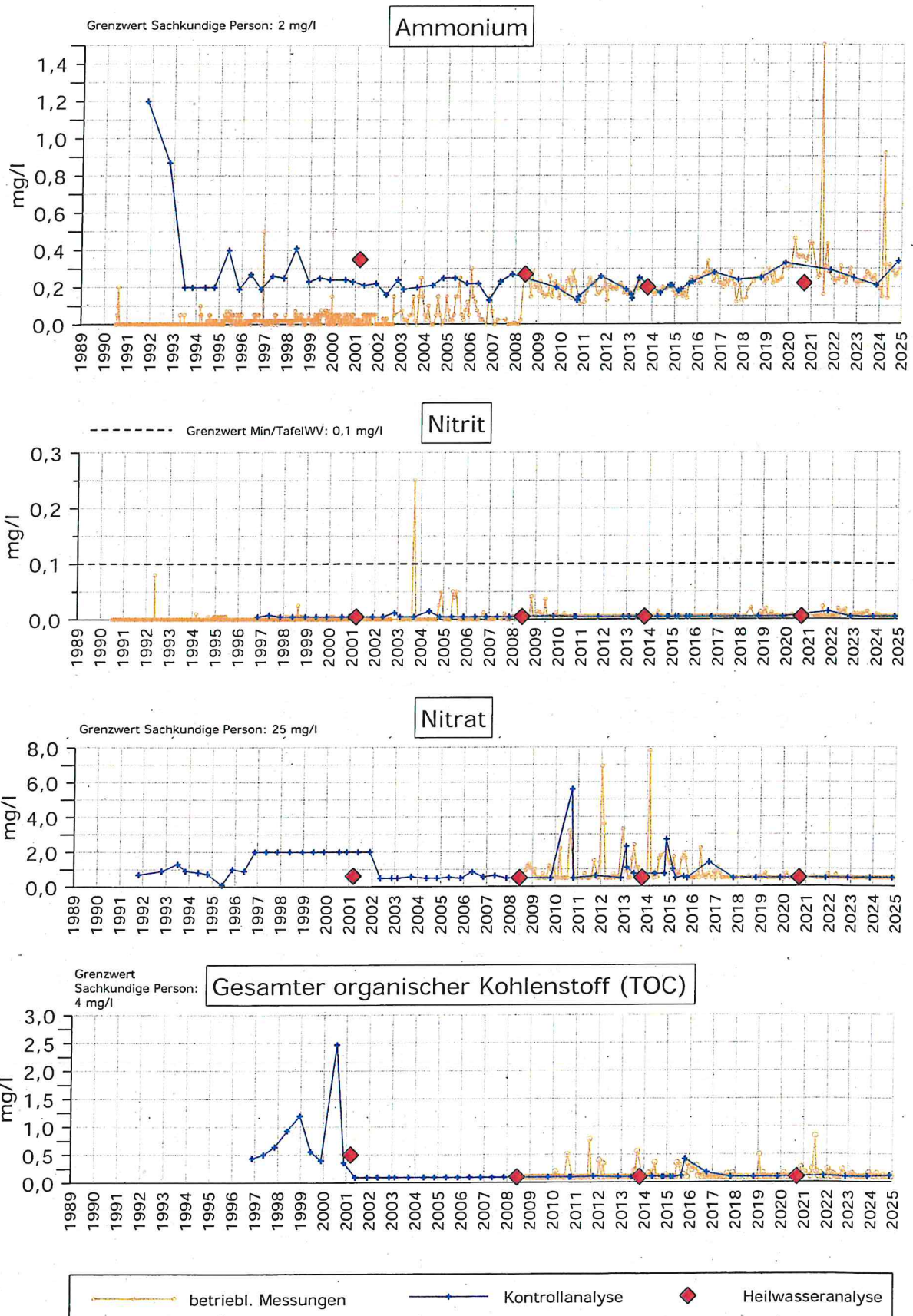
Wolfgangquelle II



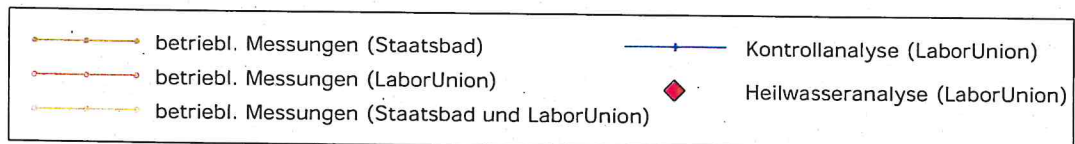
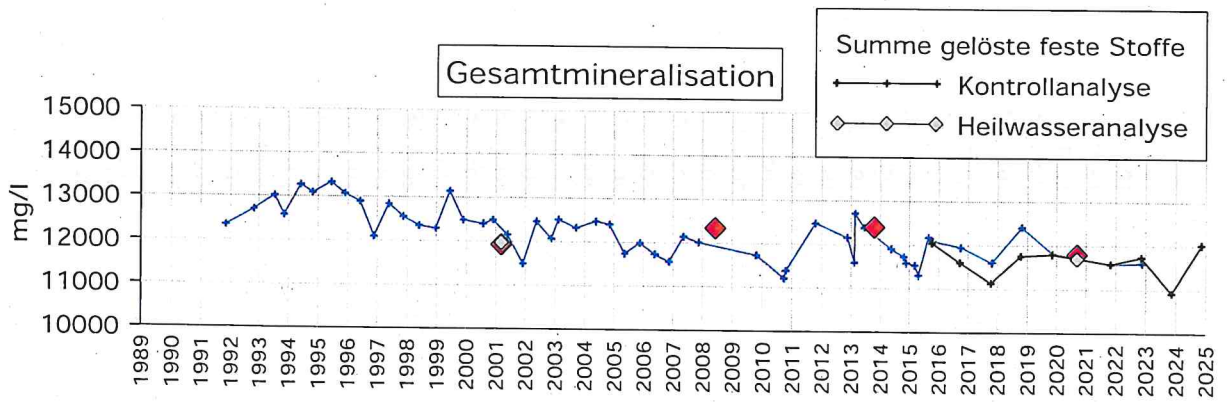
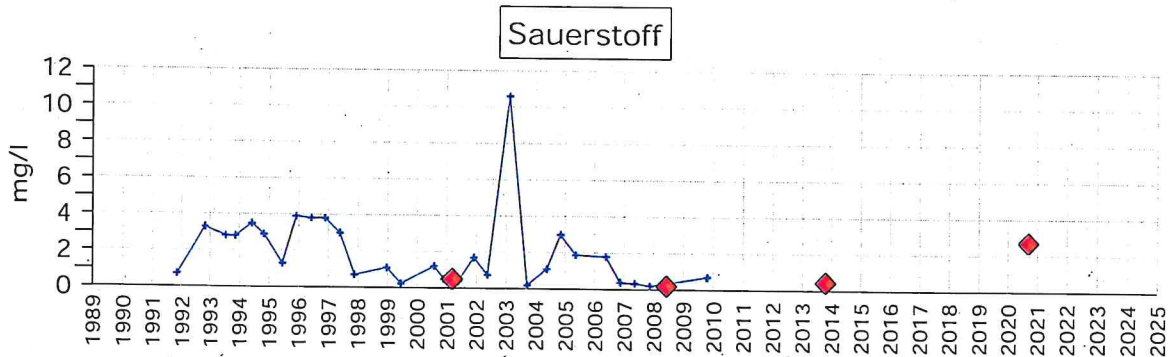
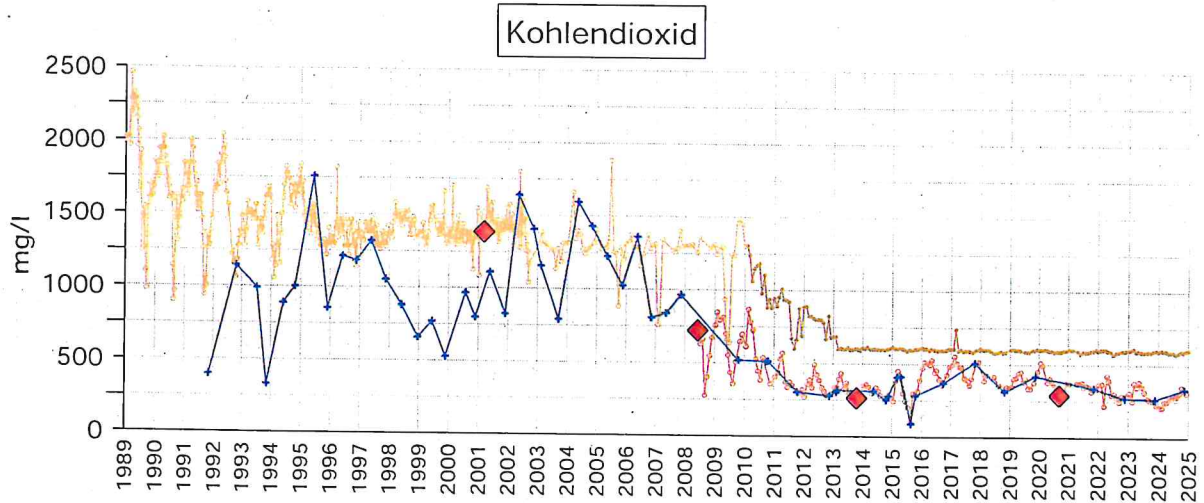
Hufelandquelle II



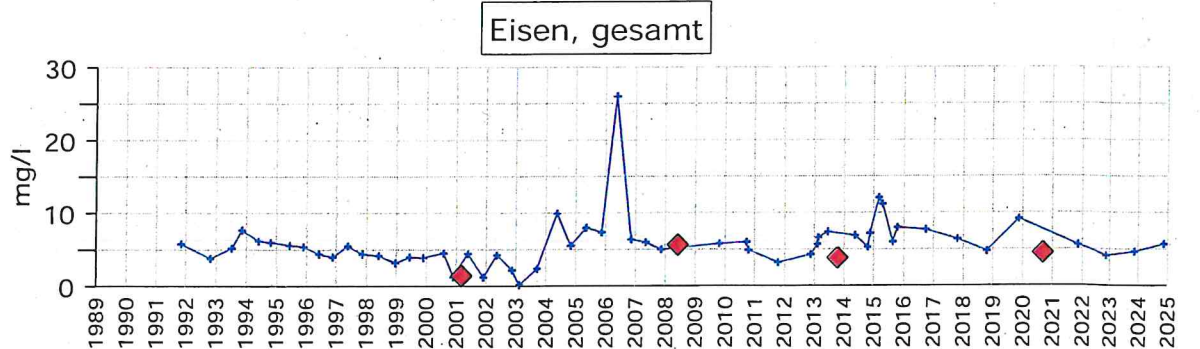
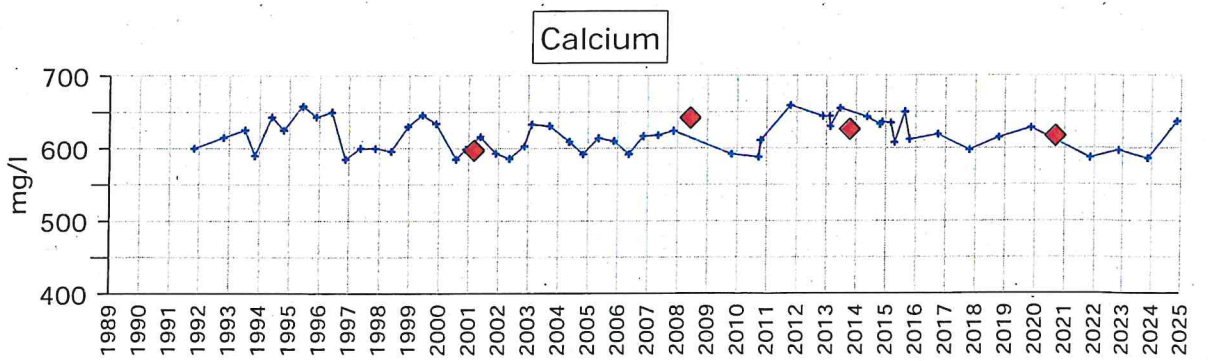
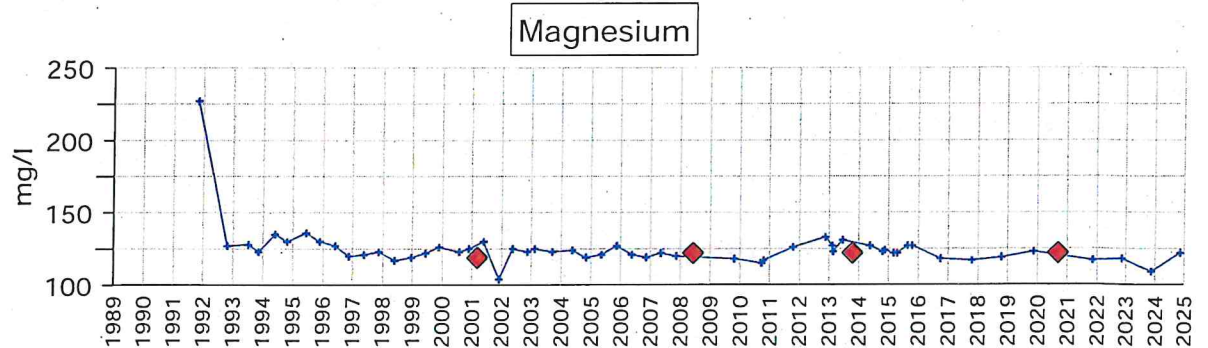
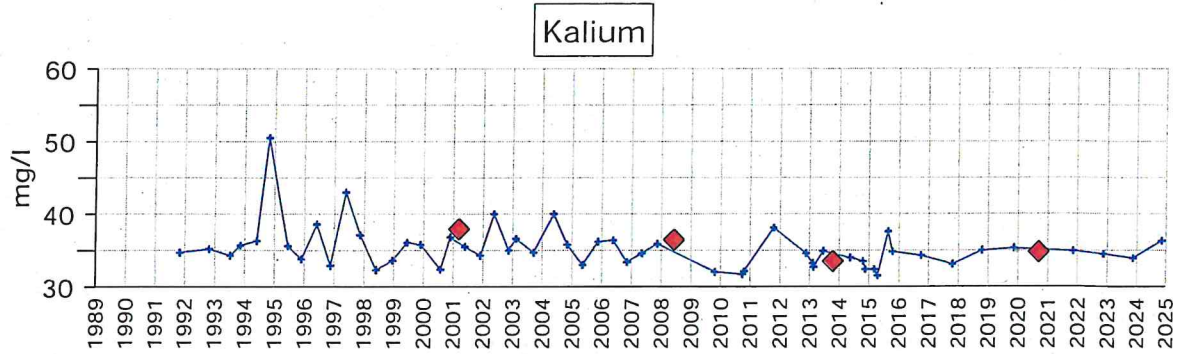
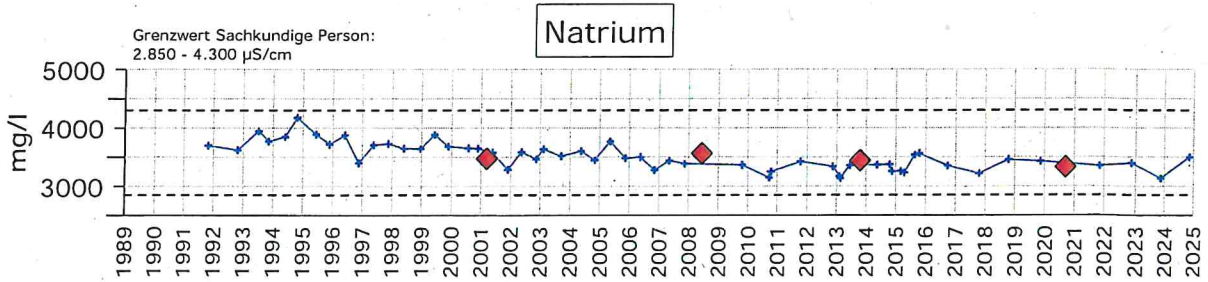
Hufelandquelle II



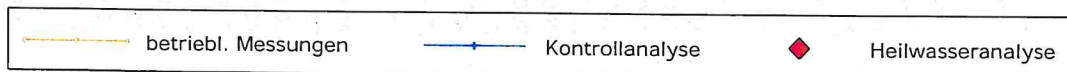
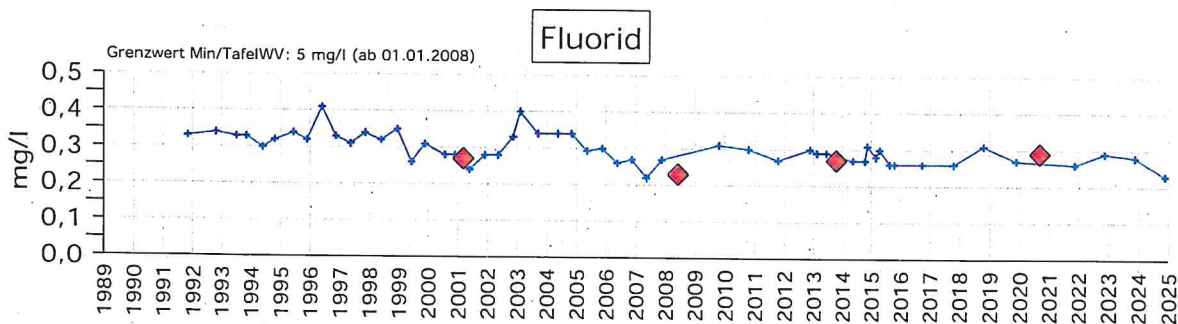
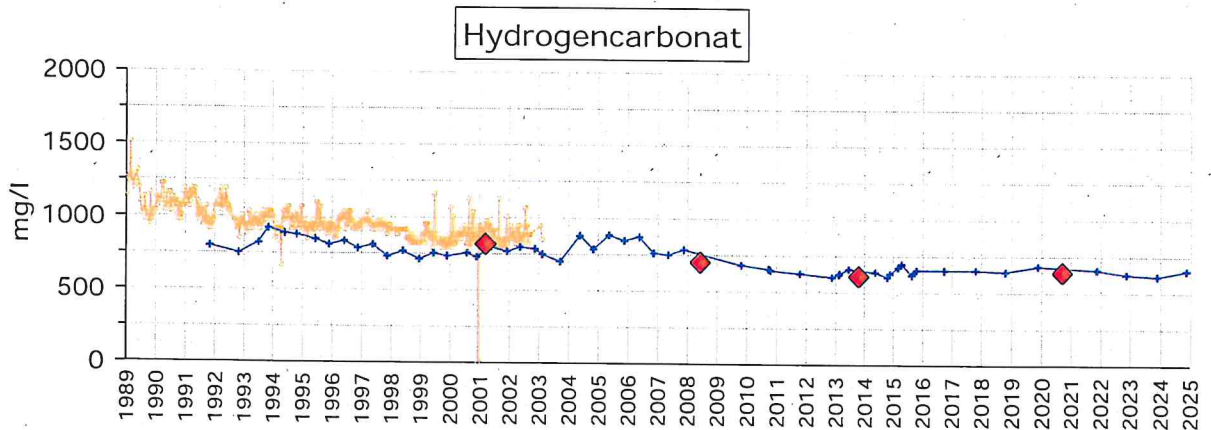
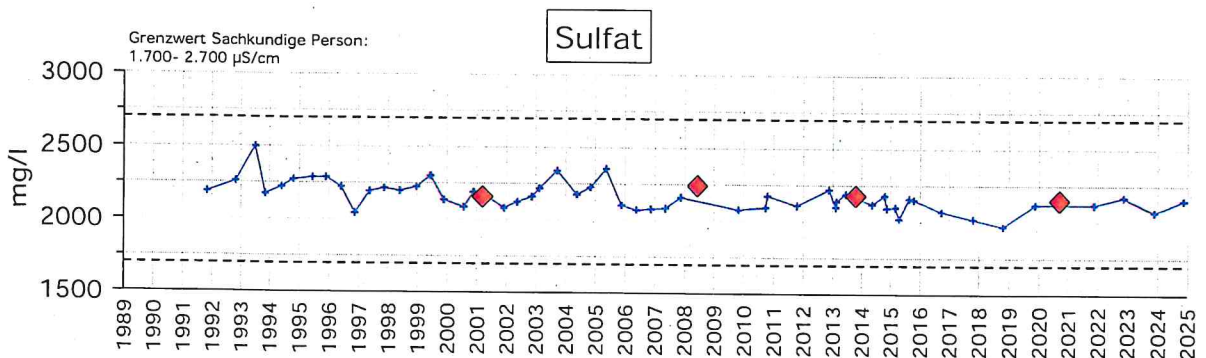
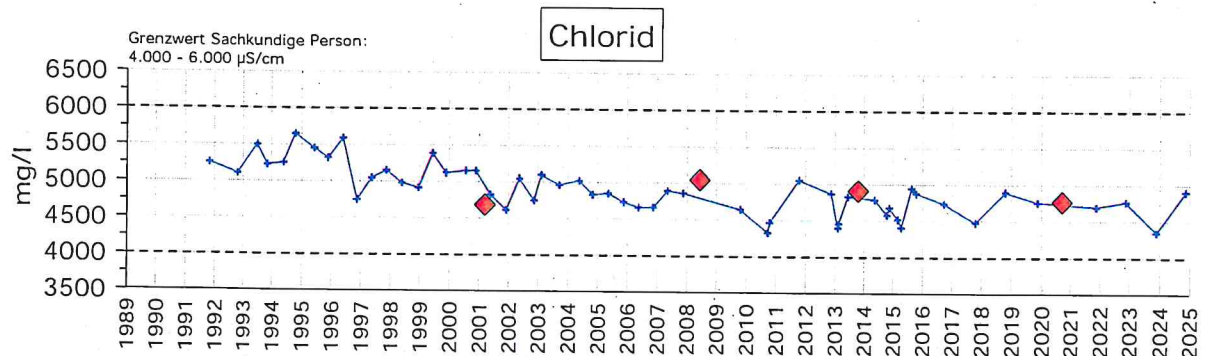
Hufelandquelle II



Hufelandquelle II

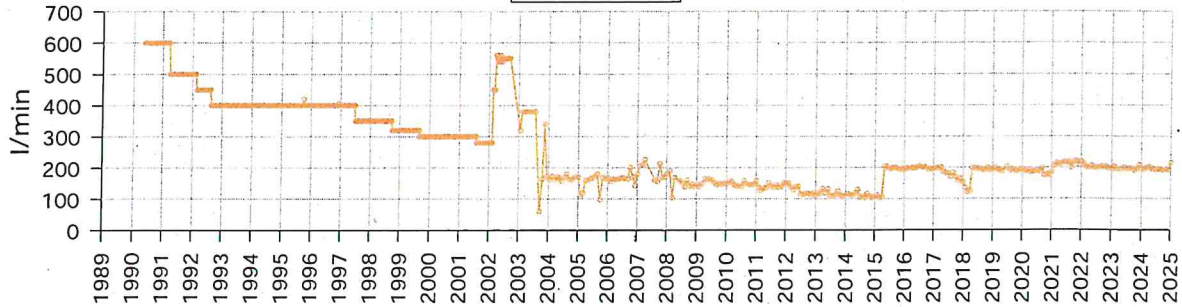


Hufelandquelle II

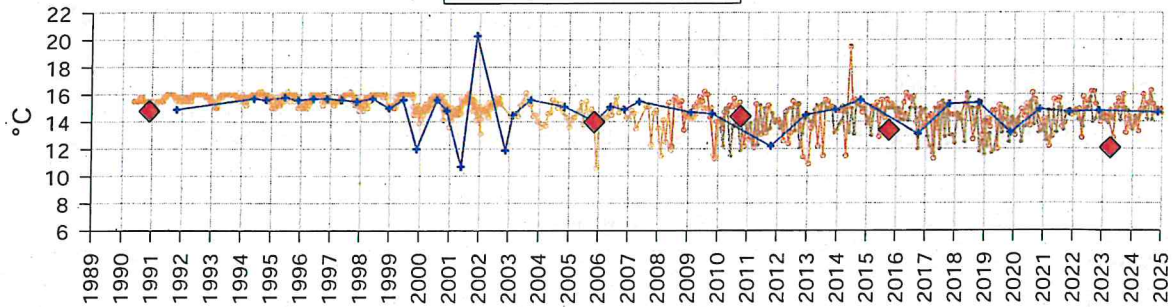


Salinenquelle I

Förderung



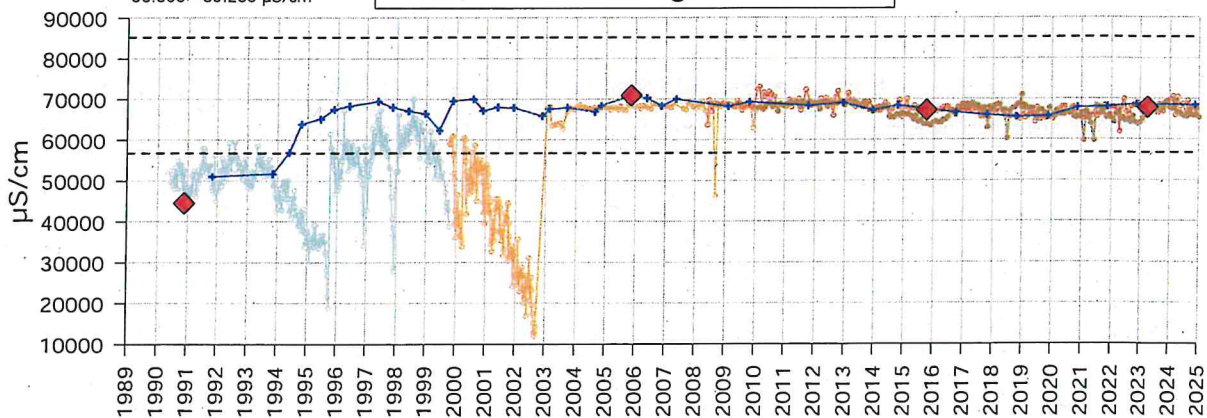
Wassertemperatur



Grenzwert Sachkundige Person:
56.800 - 85.200 $\mu\text{S/cm}$

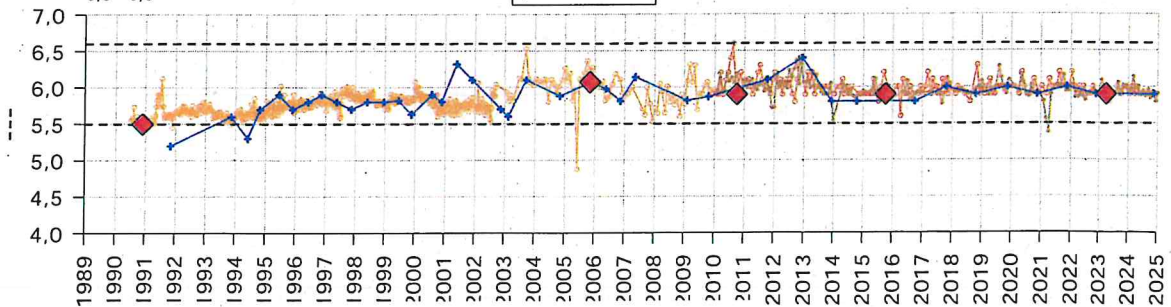
elektrische Leitfähigkeit bei 25 °C

20 °C (betriebl. Mess.)



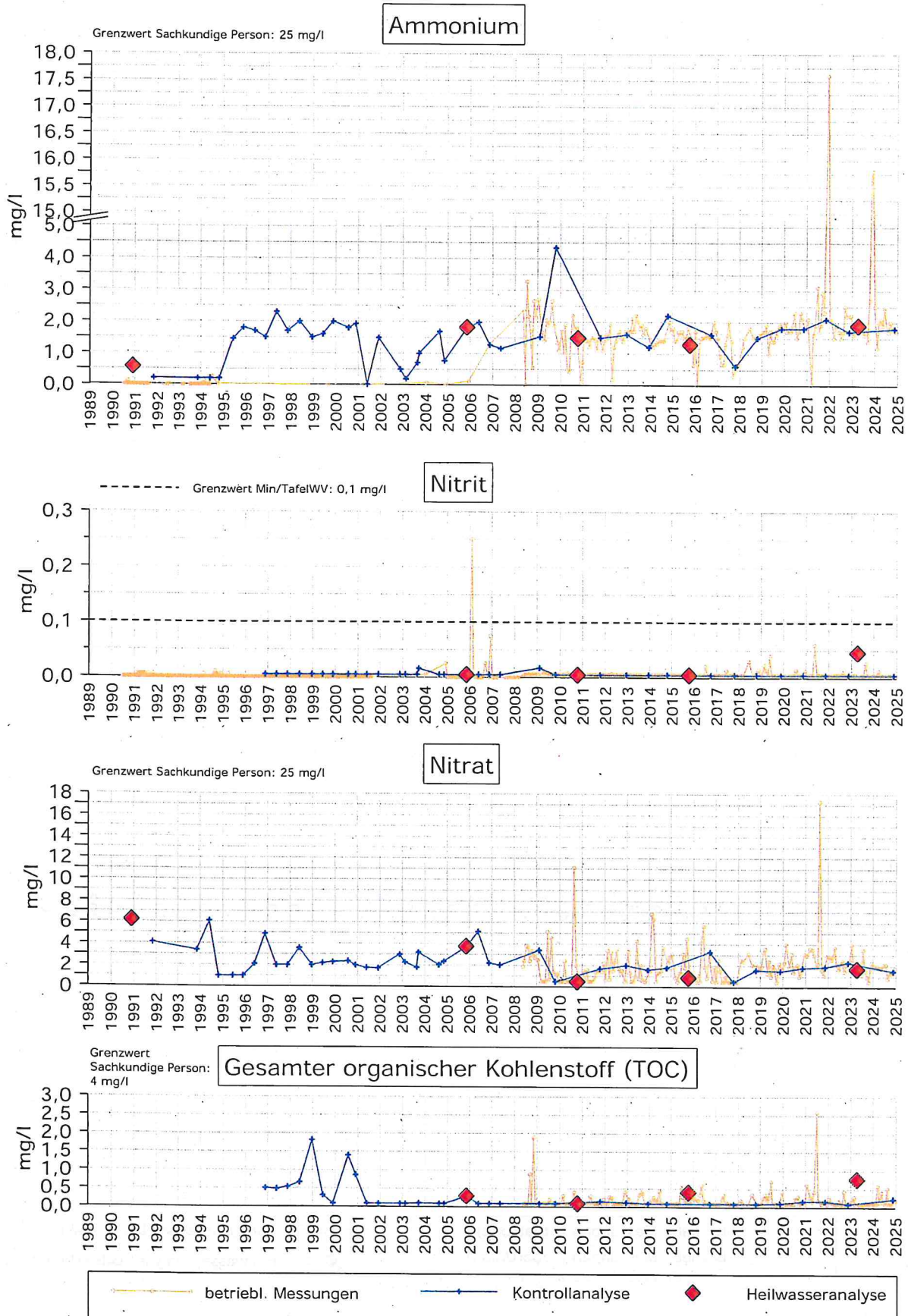
Grenzwert Sachkundige Person:
5,5 - 6,6

pH-Wert

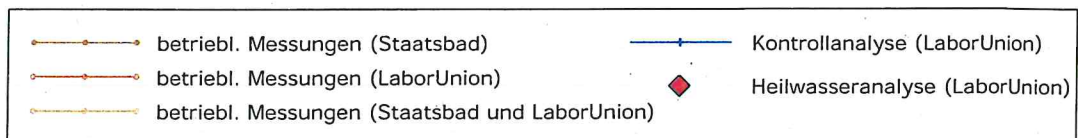
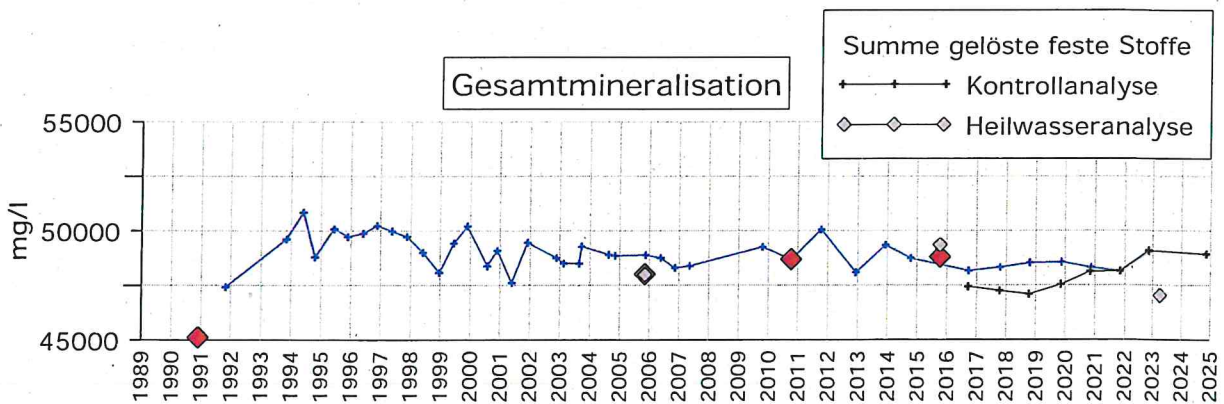
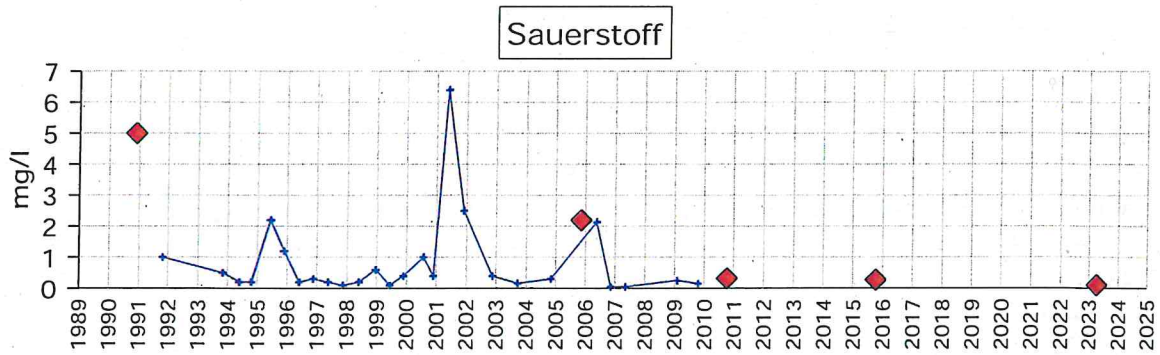
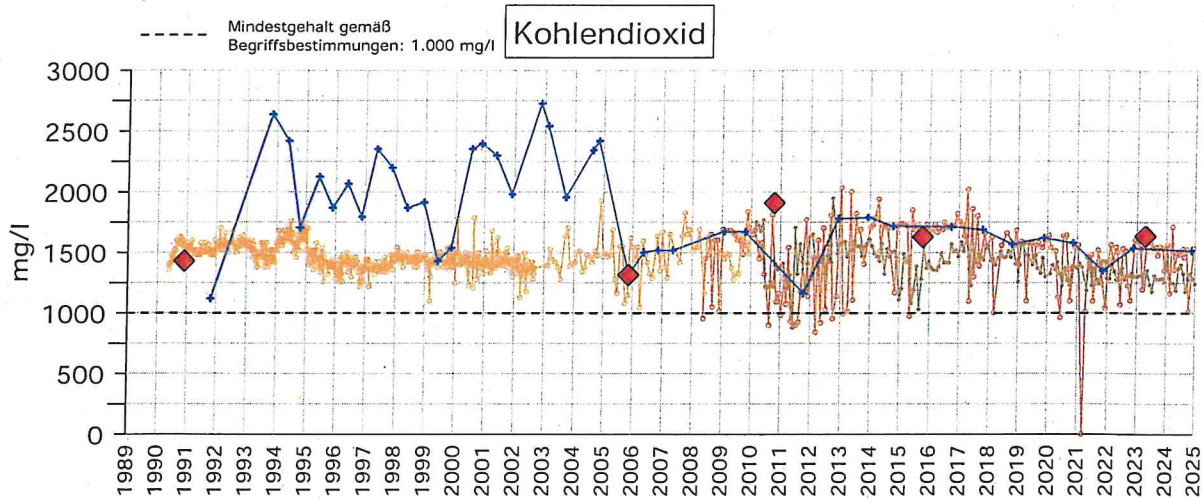


- betriebl. Messungen (Staatsbad)
- betriebl. Messungen (LaborUnion)
- betriebl. Messungen (Staatsbad und LaborUnion)
- Kontrollanalyse (LaborUnion)
- Heilwasseranalyse (LaborUnion)

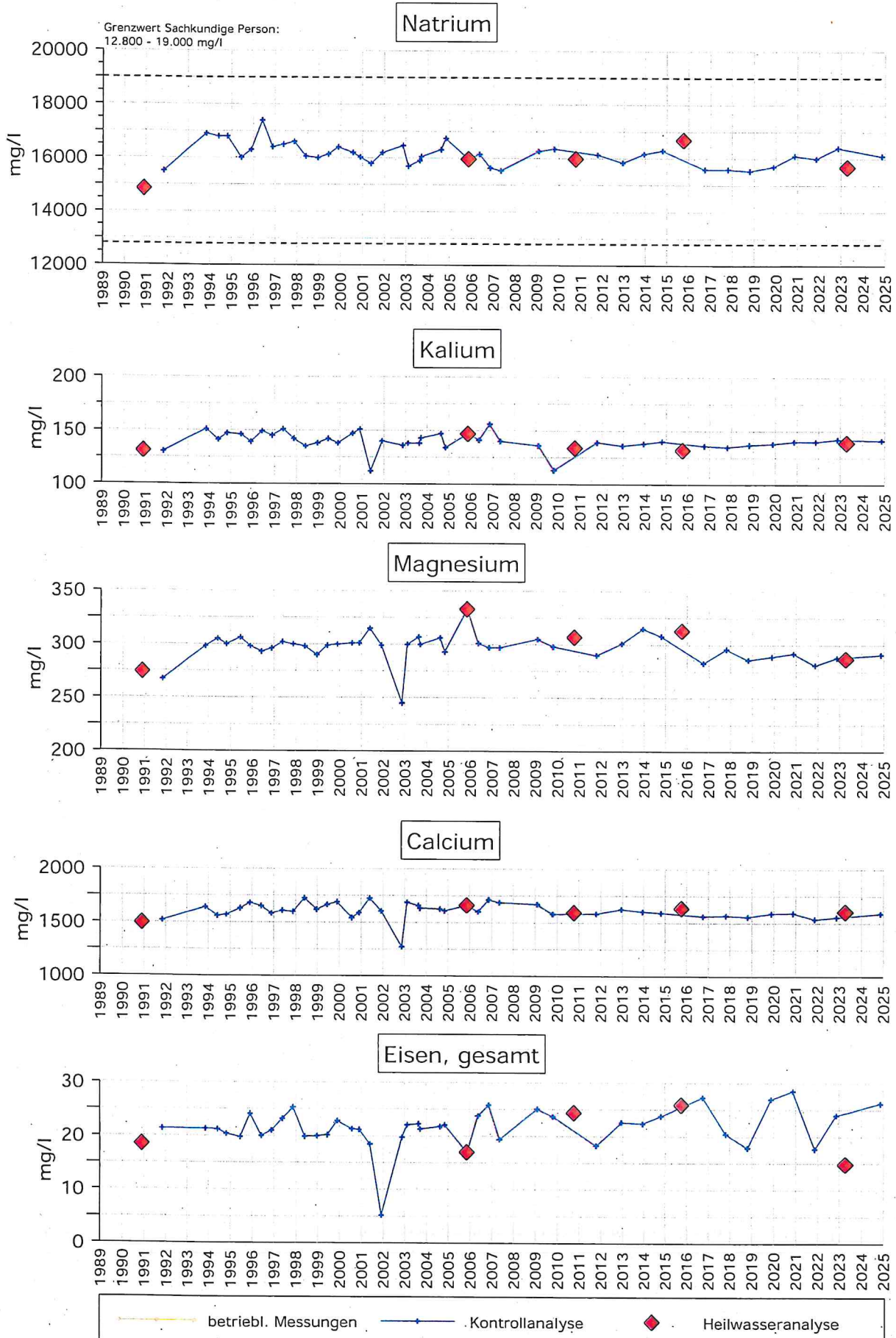
Salinenquelle I



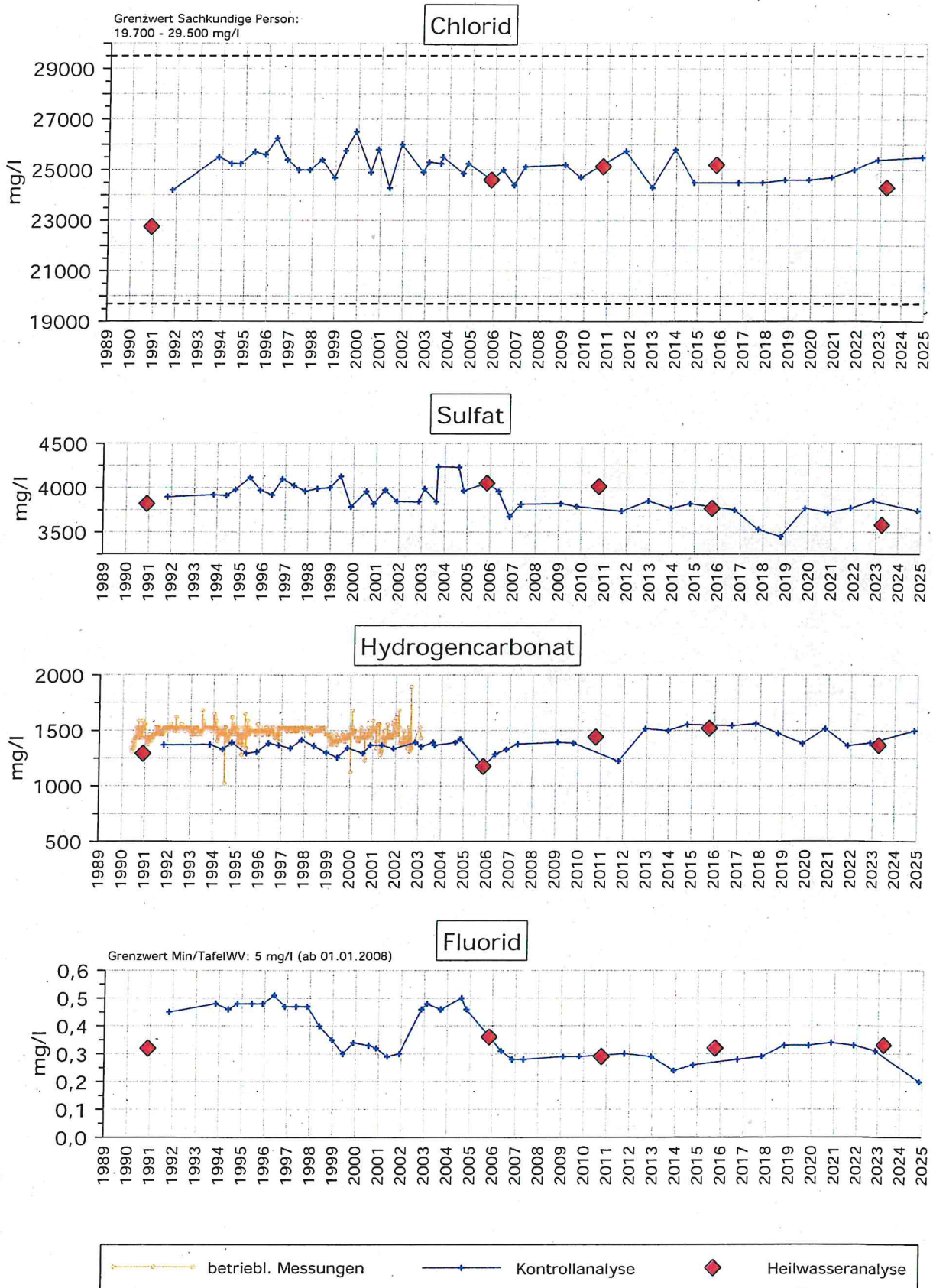
Salinenquelle I

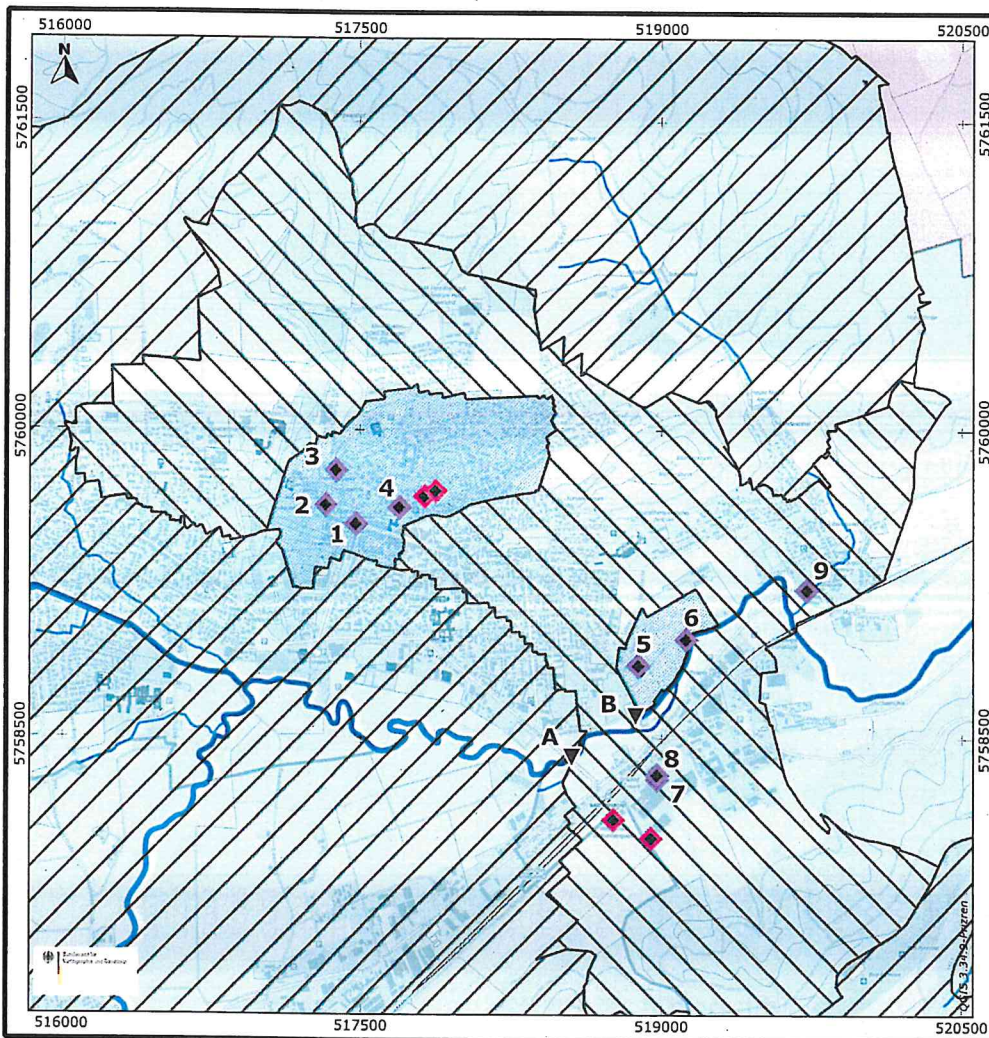


Salinenquelle I



Salinenquelle I





Staatsbad Pyrmont
 Heiligenangerstr. 6
 31812 Bad Pyrmont



Jahresbericht 2024

Lageplan

Legende

Staatlich anerkannte Heilquellen
 Nds. Staatsbades Pyrmont

- 1 Hyllige Born
- 2 Helenenquelle
- 3 Friedrichsquelle
- 4 Trampel'sche Quelle
- 5 Wolfgangquelle II
- 6 Hufelandquelle II
- 7 Salinenquelle I
- 8 Salinenquelle II
- 9 Luisenquelle

Bad Pyrmont Mineral- u. Heilquellen
 GmbH & Co OHG

Emmerpegel

- A NLWKN
- B Staatsbad Pyrmont

Heilquellenschutzgebiet Bad Pyrmont

- Schutzzone I (qualitativ)
- Schutzzone II NW (qualitativ)
- Schutzzone II SO (qualitativ)
- Schutzzone III/1 (qualitativ)
- Schutzzone III/2 (qualitativ)
- Schutzzone A (quantitativ)
- Schutzzone B (quantitativ)

Quelle:
 Kartengrundlage: Bundesamt für Kartographie und Geodäsie (BKG)
 © Basemap.de/BKG Mai 2025

Kartenprojektion: ETRS89 / UTM Zone 32N (EPSG: 25832)

Maßstab (Ausgabe DIN A4) 1:25.000

0 300 600 900 1.200 1.500 [m]

GeoDienste GmbH
 Geologie - Hydrogeologie - Geothermie
 Heiligenangerstr. 6, 31812 Pyrmont
 Telefon: +49 521 7648-19
 Telefax: +49 521 7648-29

Bearb.: S. Schweizer
 Projekt-Nr.: 0115061
 Datum: 27.05.2025
 Anhang: 8

Datei: 0115061_Bericht-Lageplan.qgz Layout: Lageplan-Jahresbericht